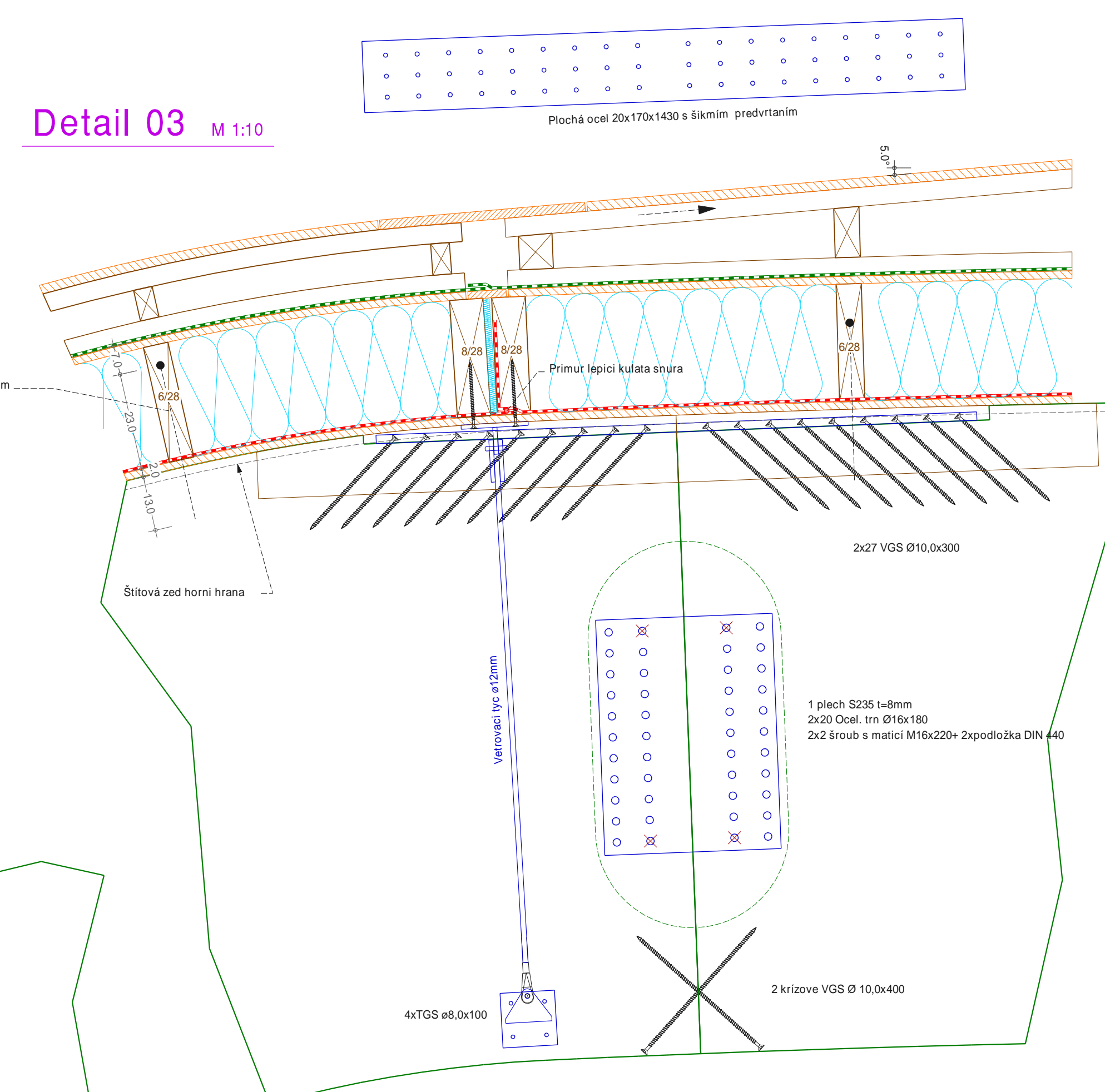
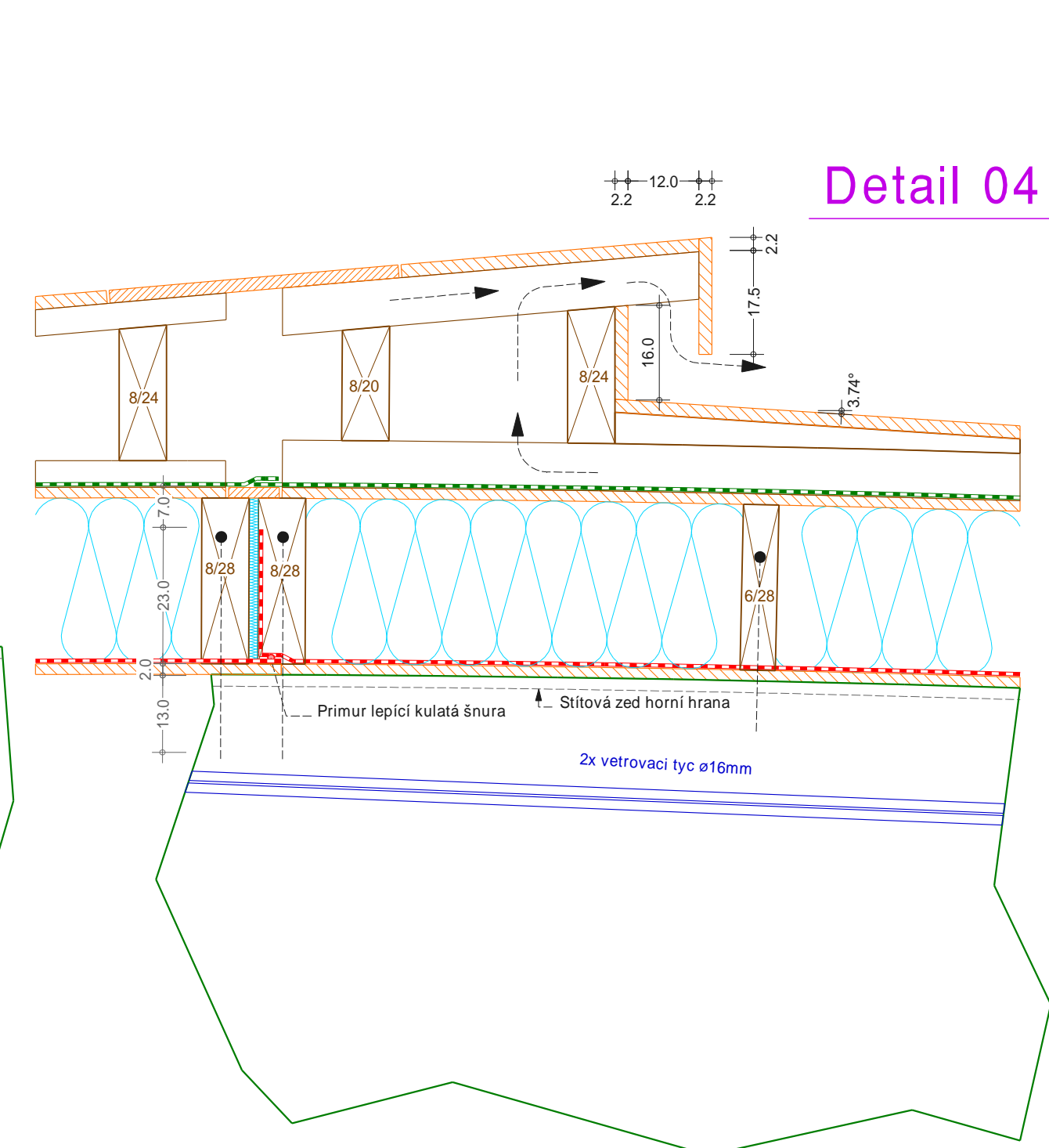


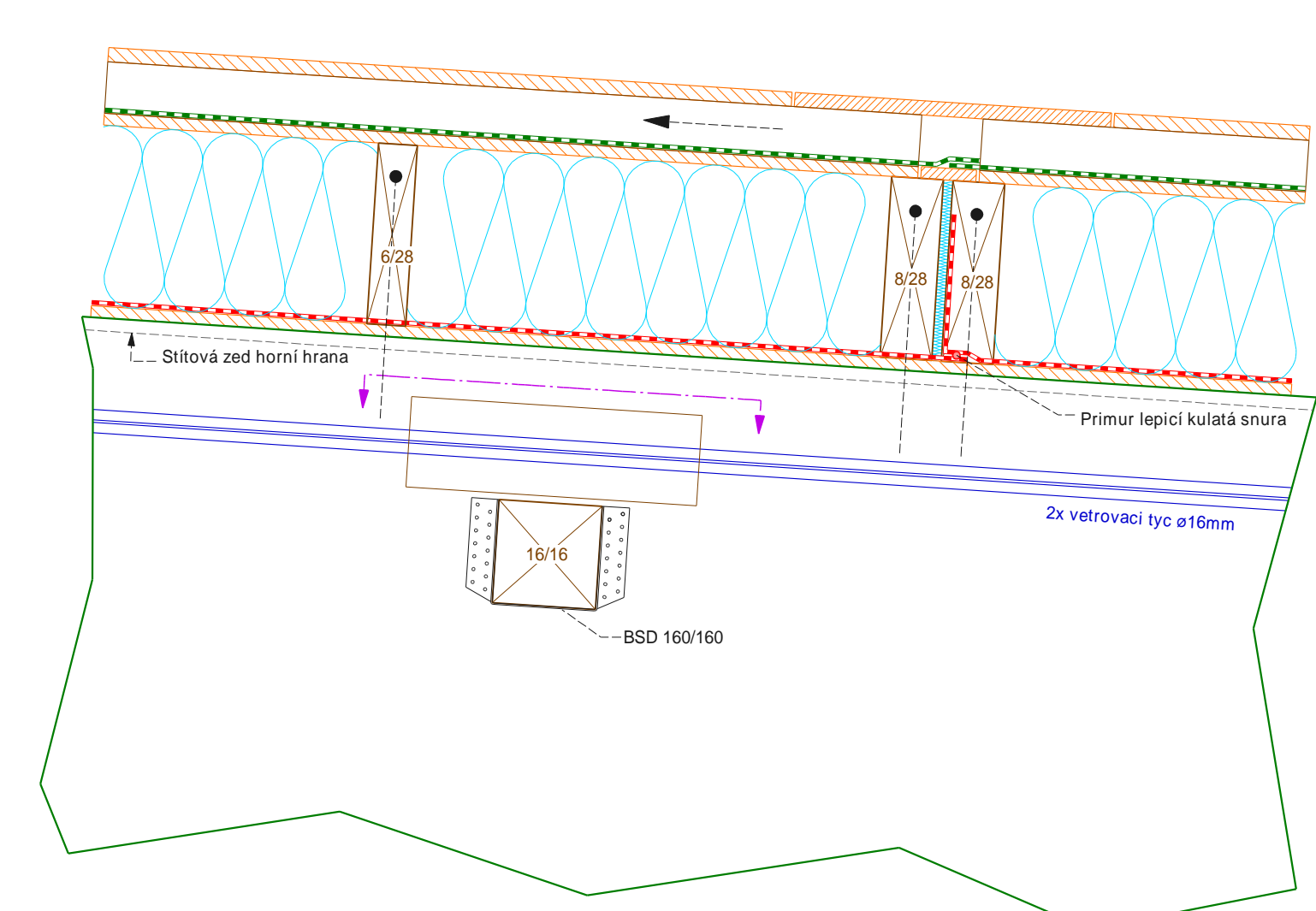
Detail 03 M 1:10



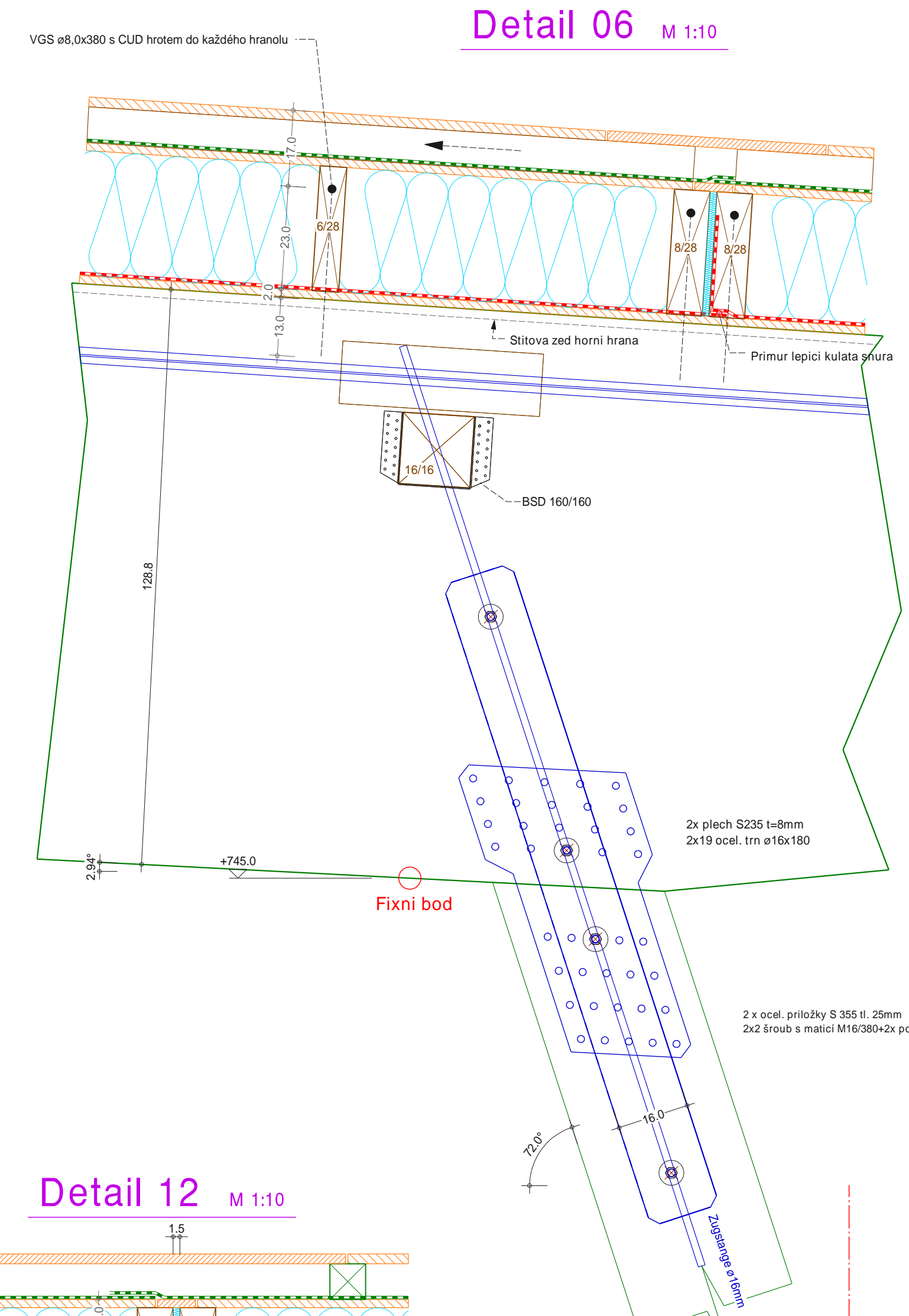
Detail 04 M 1:10



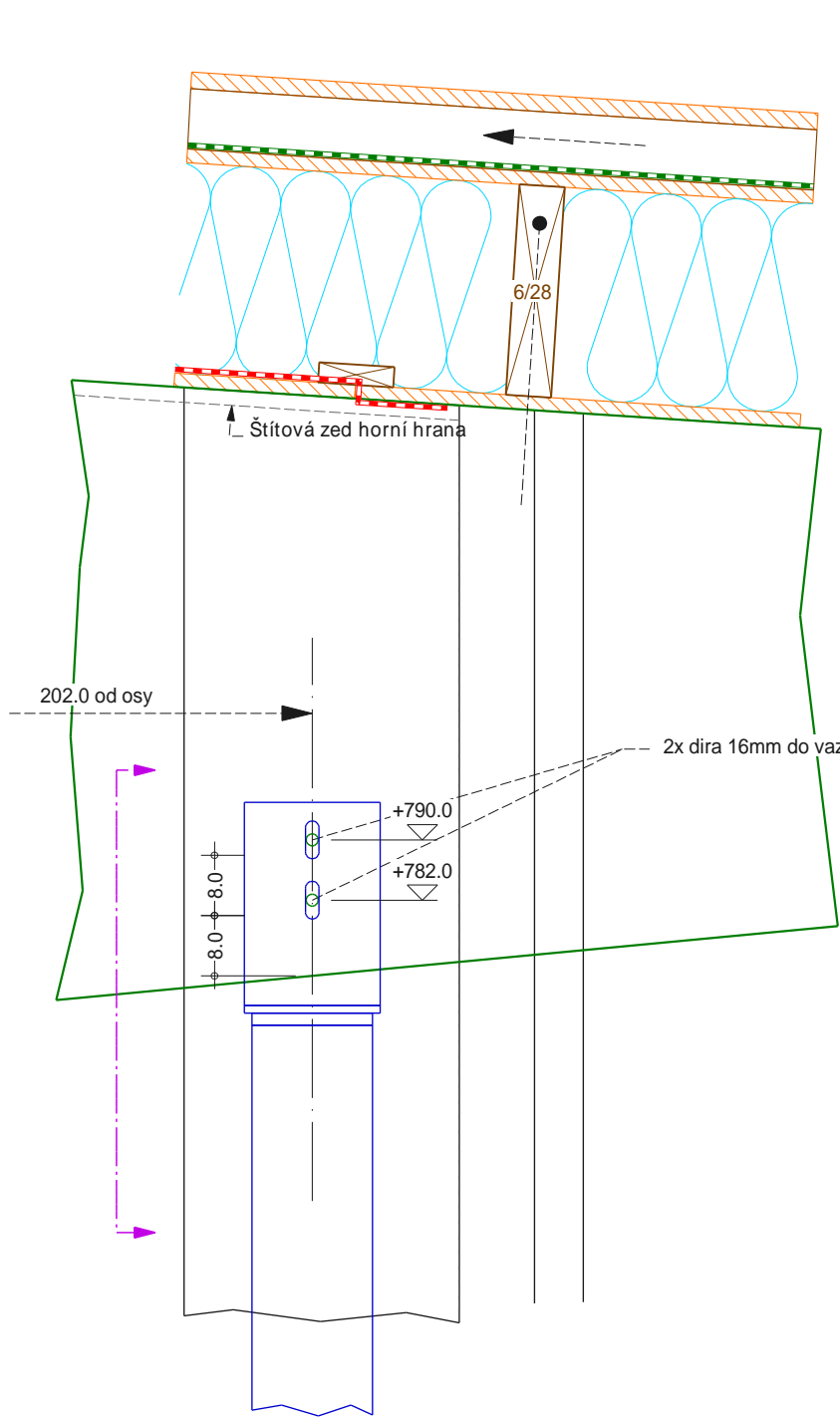
Detail 05 M 1:10



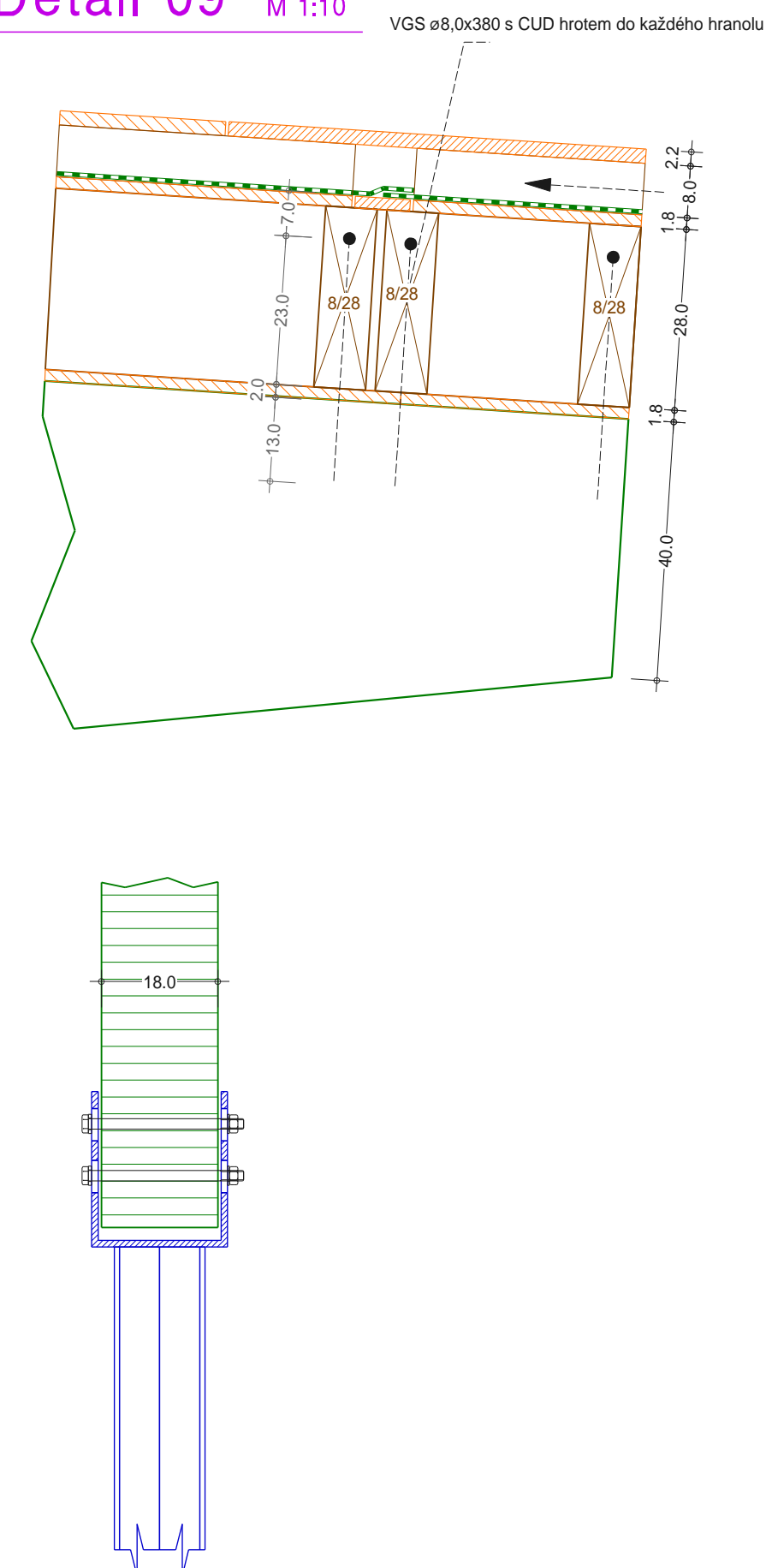
Detail 06 M 1:10



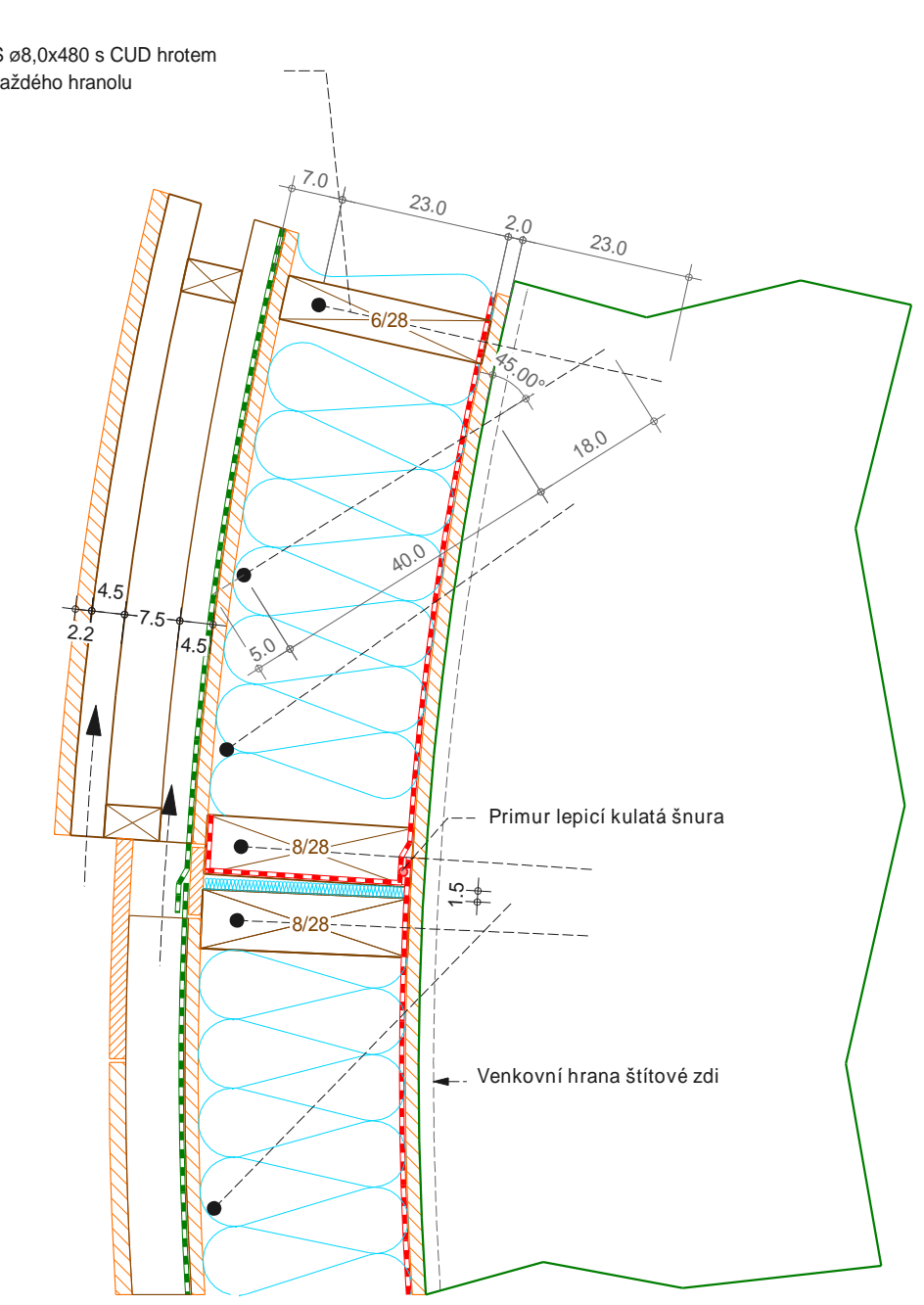
Detail 08 M 1:10



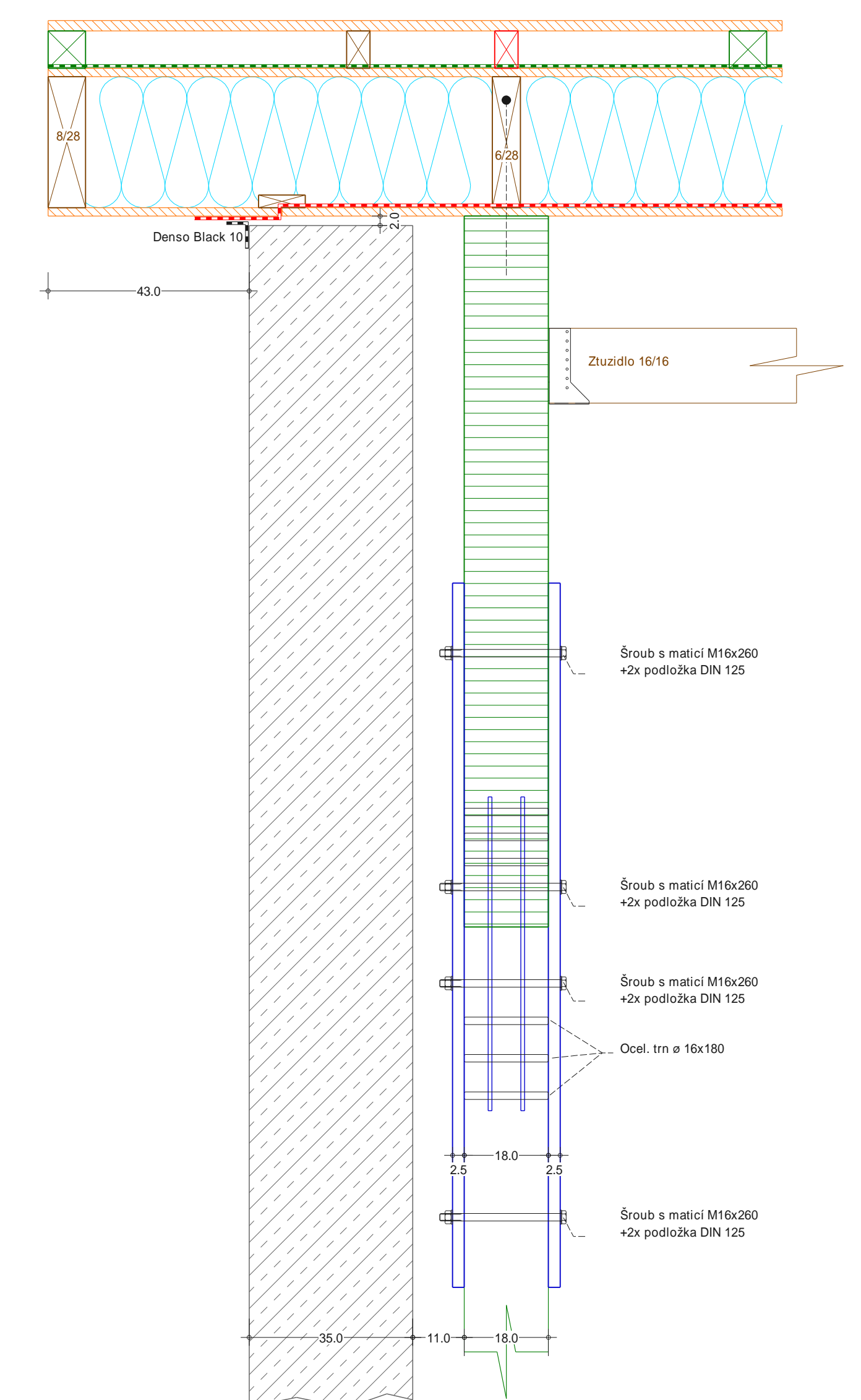
Detail 09 M 1:10



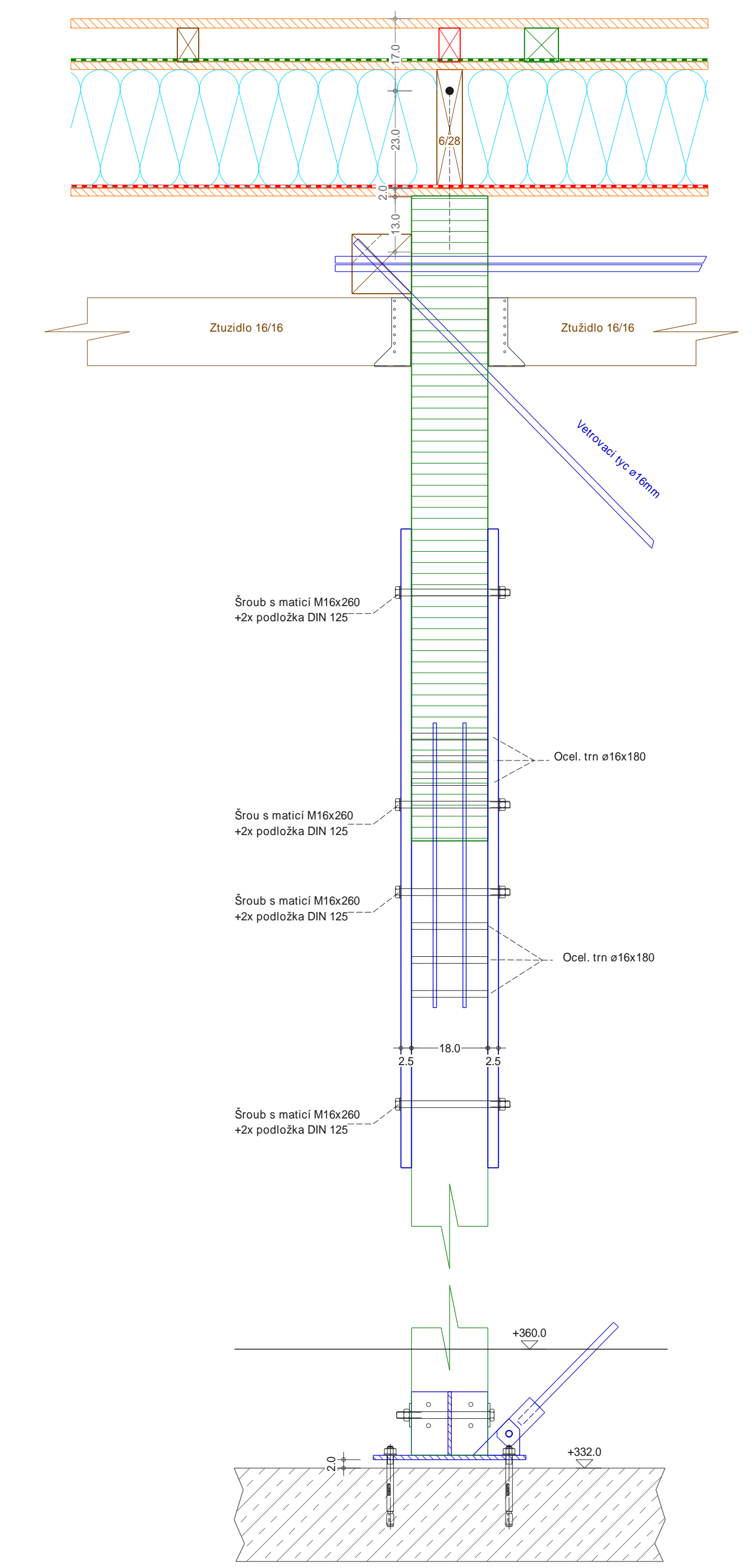
Detail 02 M 1:10



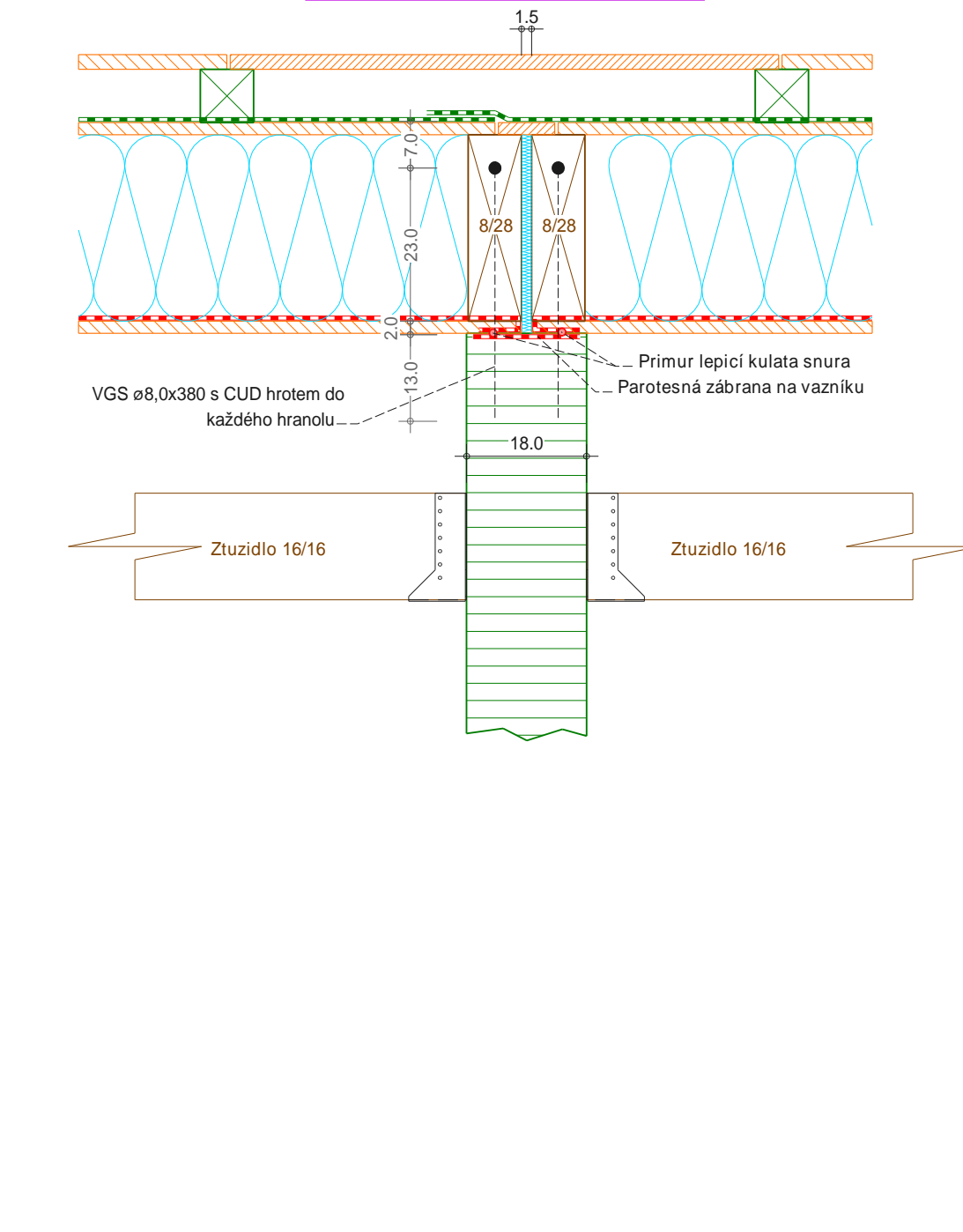
Detail 10 M 1:10



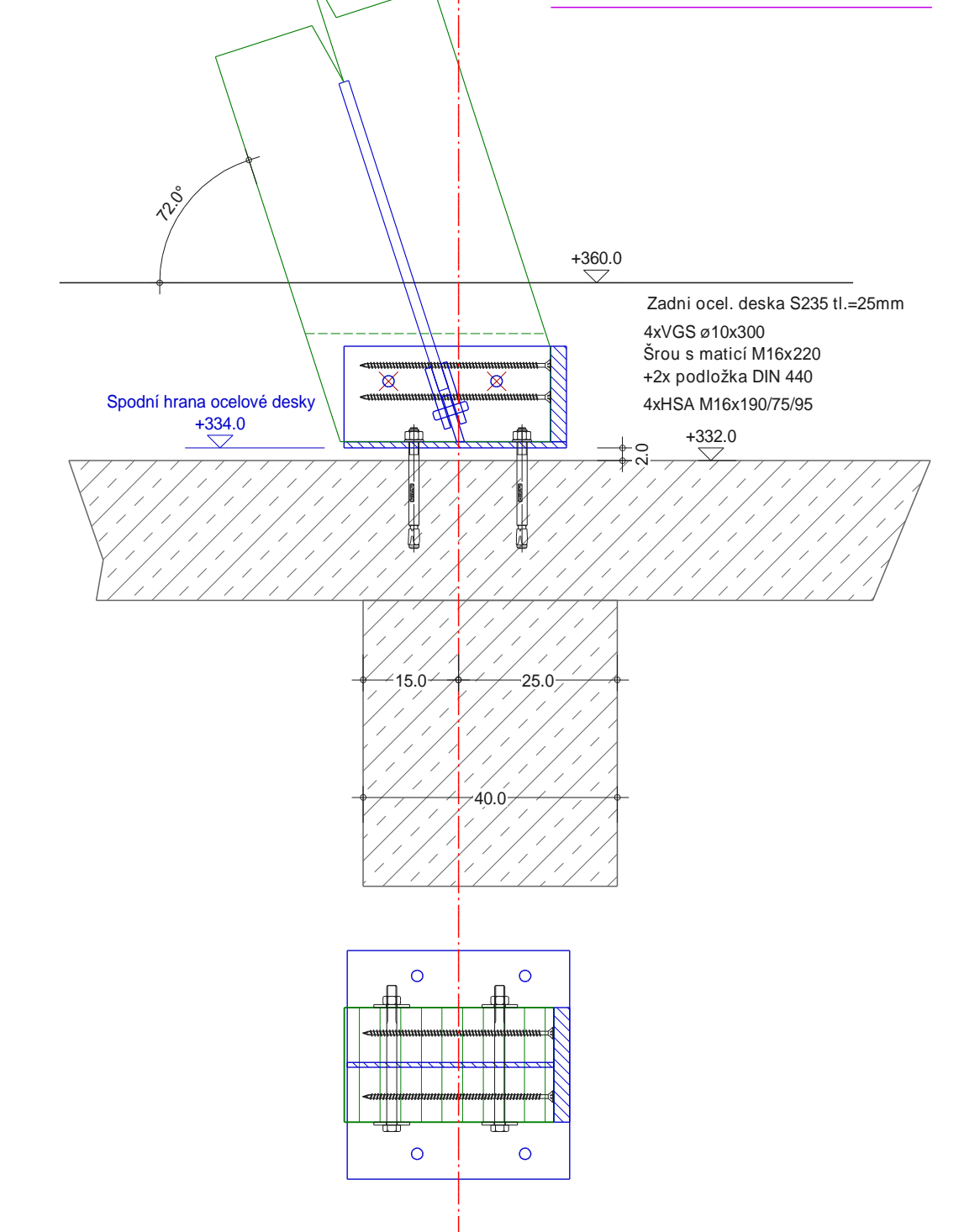
Detail 11 M 1:10



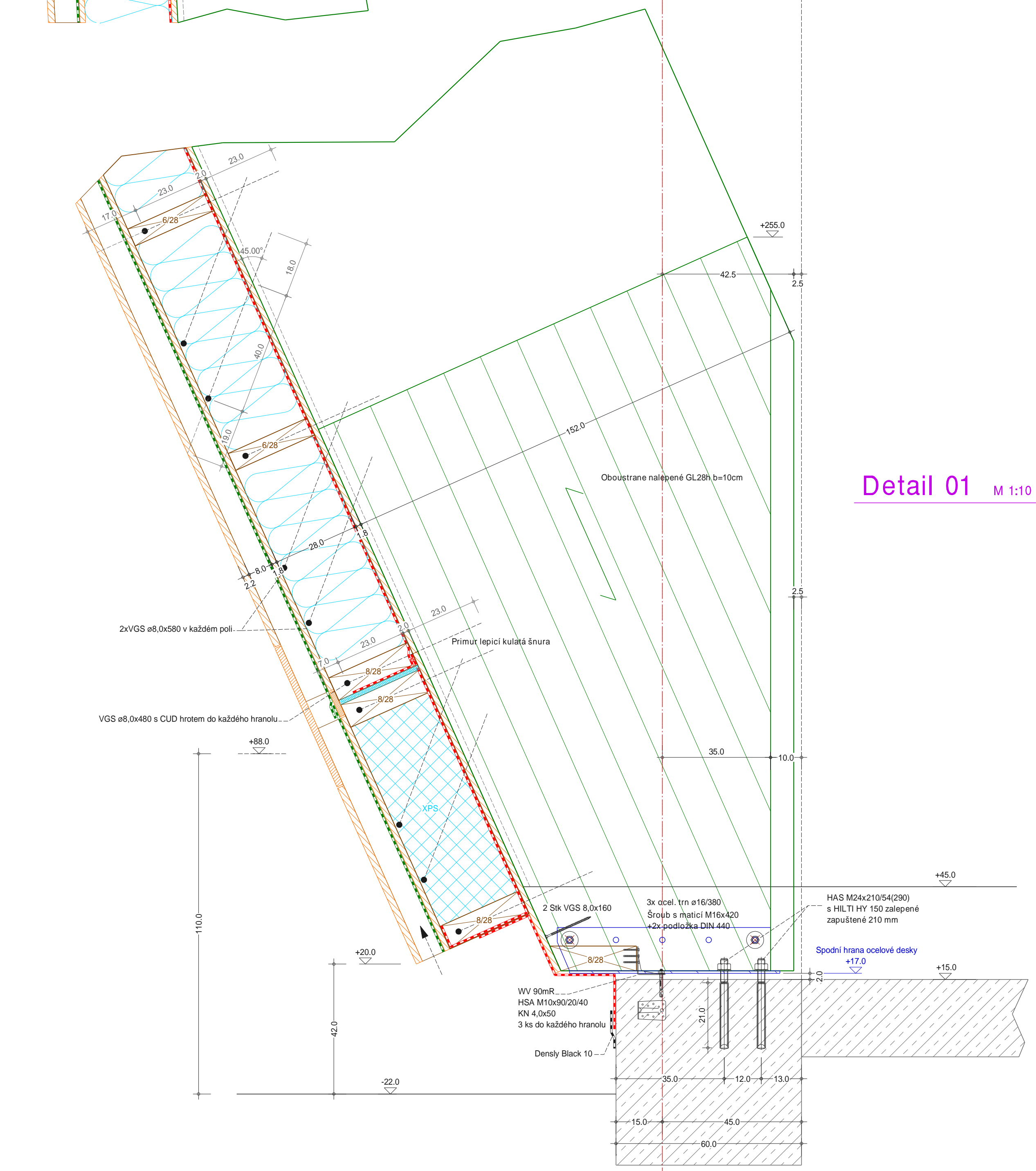
Detail 12 M 1:10



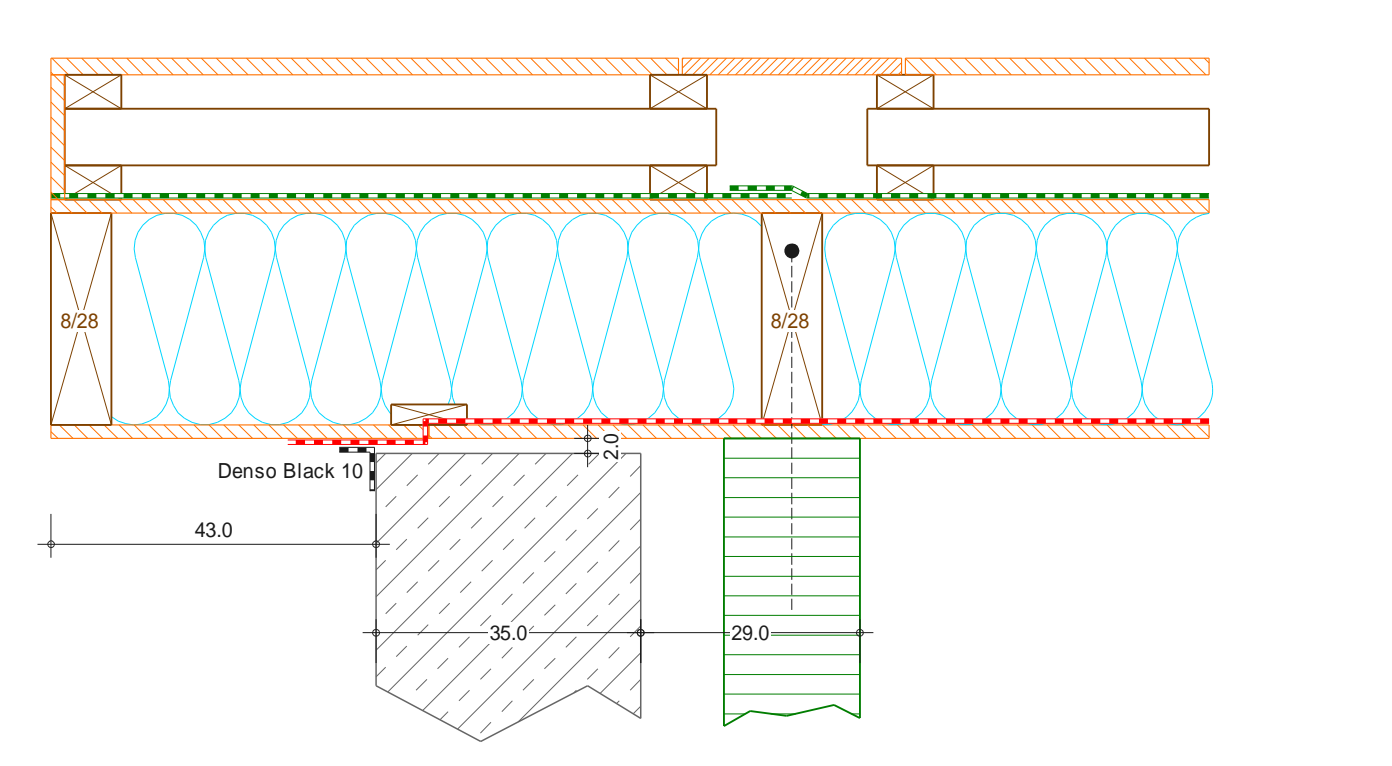
Detail 07 M 1:10



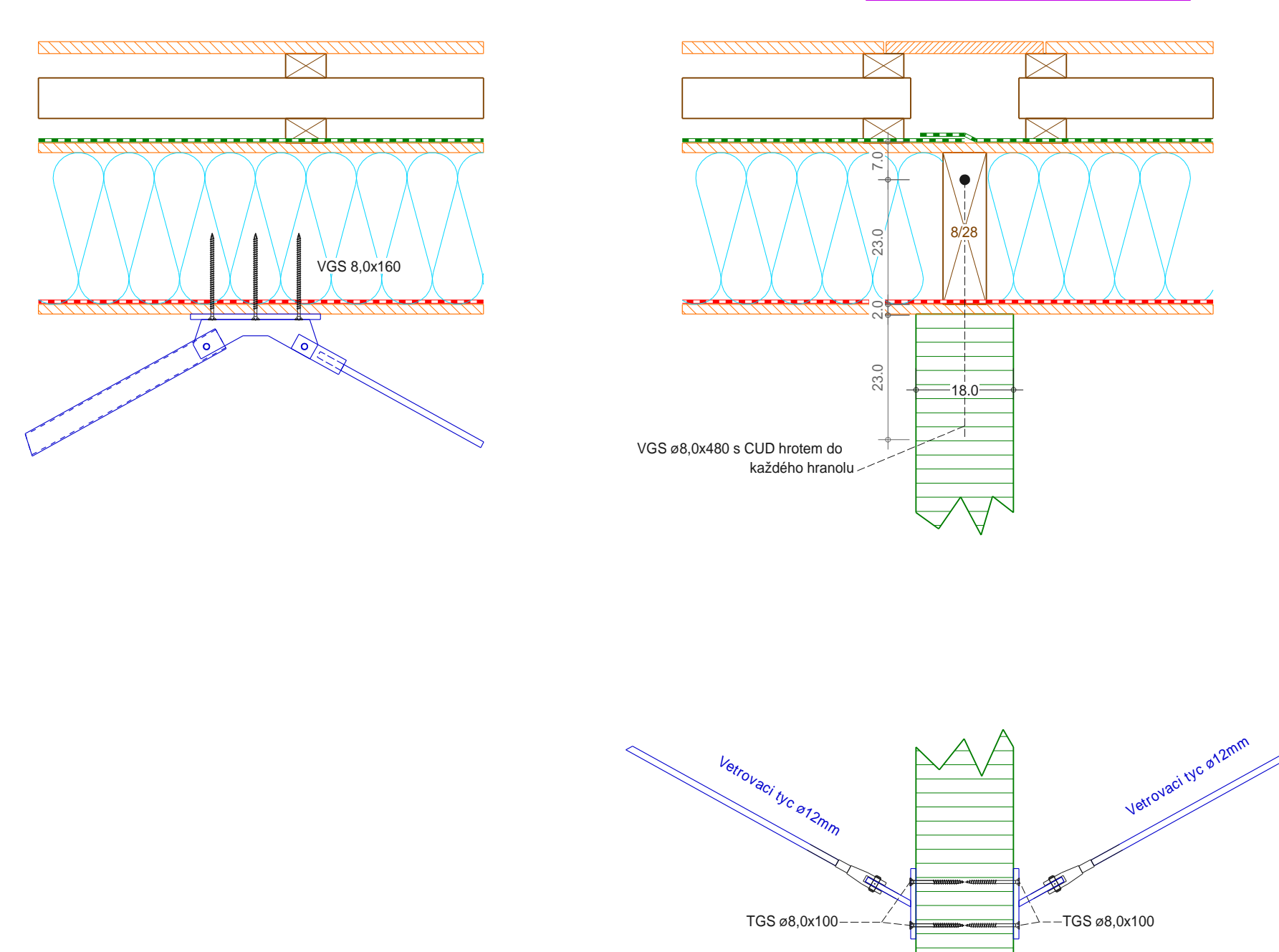
Detail 01 M 1:10



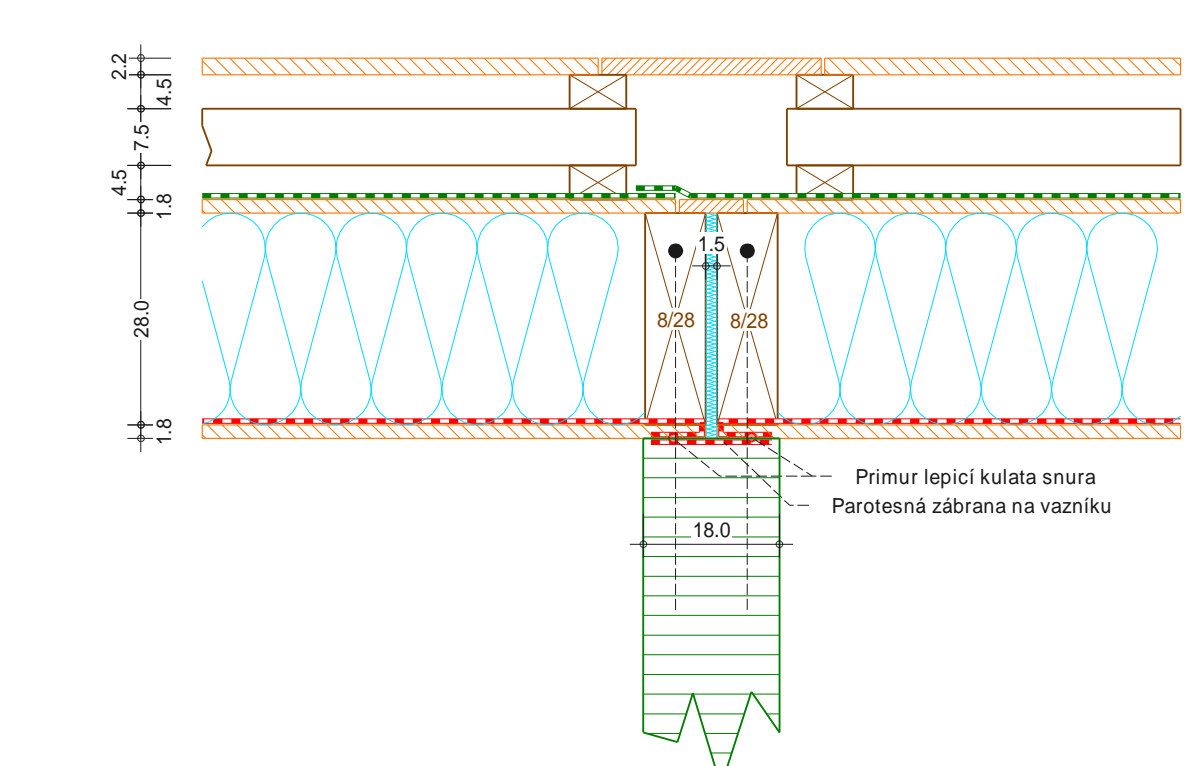
Detail 13 M 1:10



Detail 14 M 1:10



Detail 15 M 1:10



ÄNDERUNG			
A	08.08.2011	gr	APS ve sponovém panelu
B	31.08.2011	gr	Dodatečné větrání proti klopení M12 dle statiky
C	-	-	-
D	-	-	-

Graf-Holztechnik GmbH			
Hochhausstraße 1		Tel: 02982/4121-0	
A-2580 Hain		Fax: 02982/4121-6880	
Internet: www.graf-holztechnik.at		E-Mail: graf.holz@vnet.at	
Název	Prováděcí dokumentace	M 1:10	
Obsah	Detail		
Akce	Sportovní hala Chodov	Kst: 50/4701	
Objednatel	Tima s.r.o		
Vypracoval	Šma	Kontrola	SWD
Pracoval		Datum	03.08.2011
Číslo výkresu	50/602/02		

