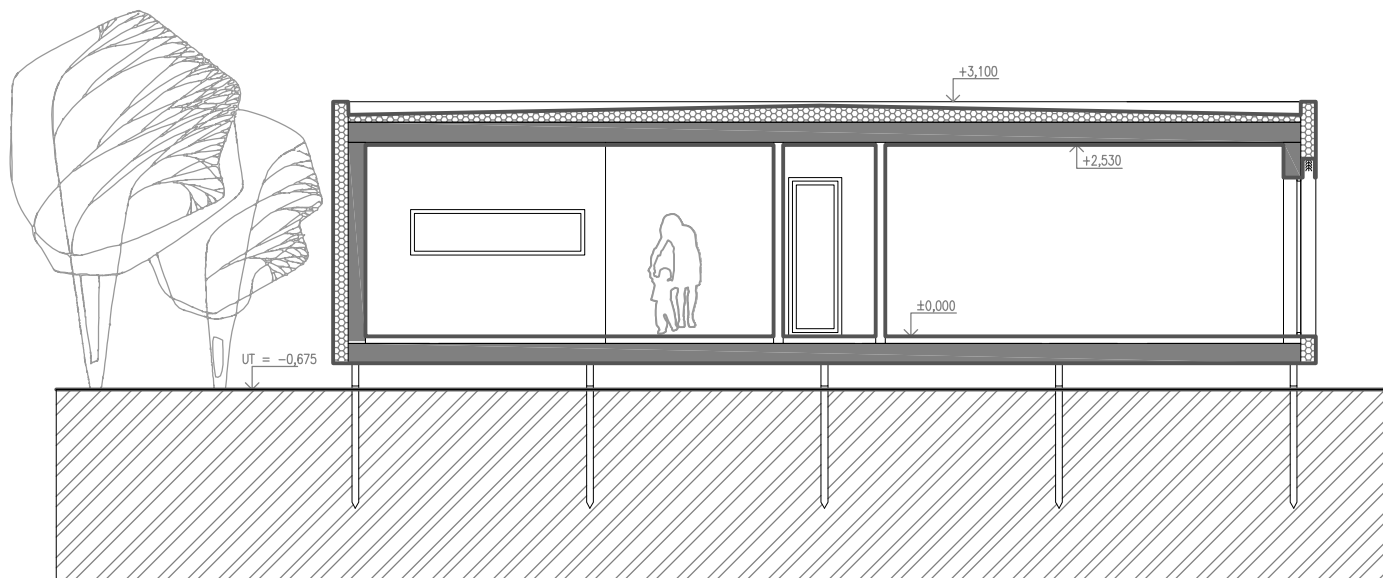
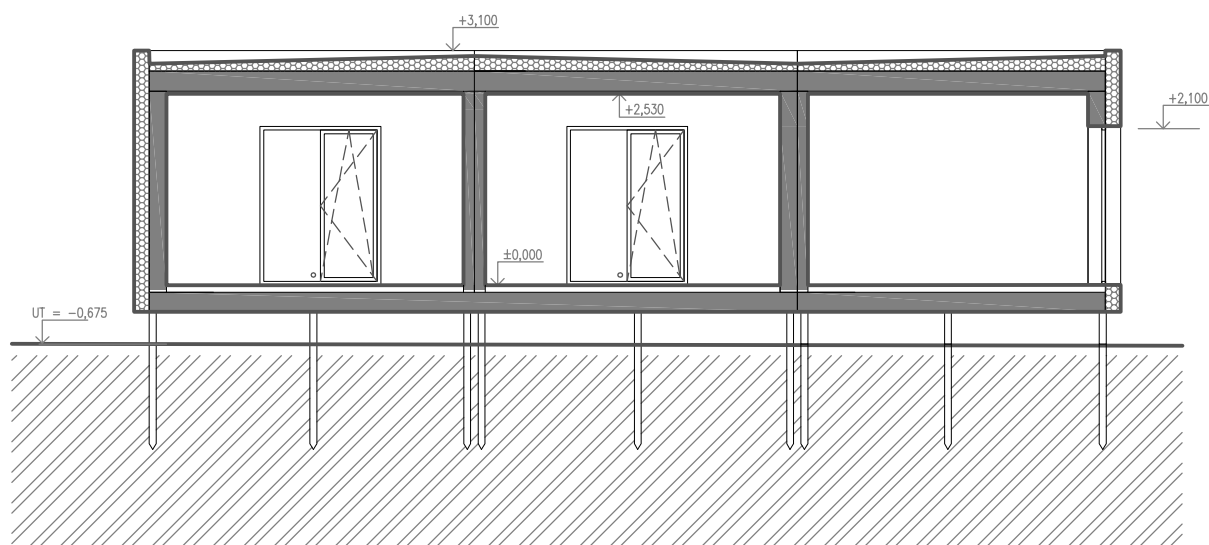


ŘEZY KONSTRUKCÍ

ŘEZ A-A'

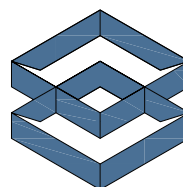


ŘEZ B-B'



ČTYŘMODUL 2x 4x13 + 4,5 x 7,3 + 4,5x5,3 m

dispozice: 5 + kk
zastavěná plocha: 172,0 m²
užitná plocha: 137,0 m²



EKO
MODULAR