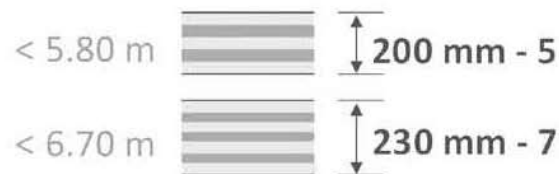
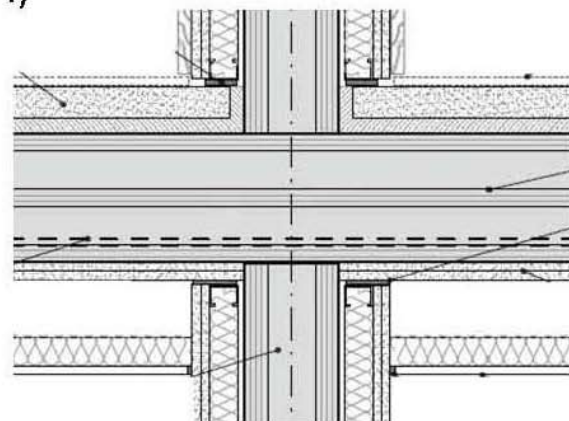
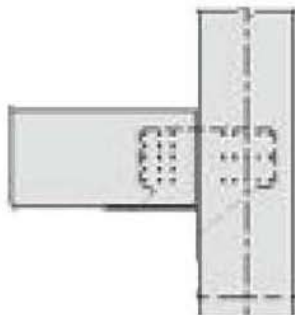
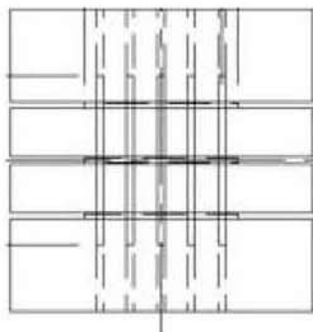


**STATICKÝ NÁVRH:** CLT STĚNA- 140-250MM,CLT STROP 230MM,  
VAZNÍKY 350X1200X 9m



**POŽÁRNÍ NÁVRH :** CLT - 90 MINUT, JÁDRO -120 MINUT,  
VAZNÍKY - SPRINKLERY



**NÁVRH NEPRŮZVUČNOSTI :** CLT ZDVOJENÁ KCE ,PODHLÉD, STROP DŘEVOBETON

