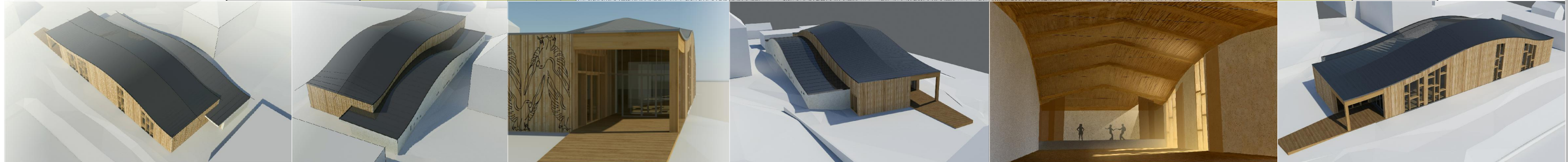
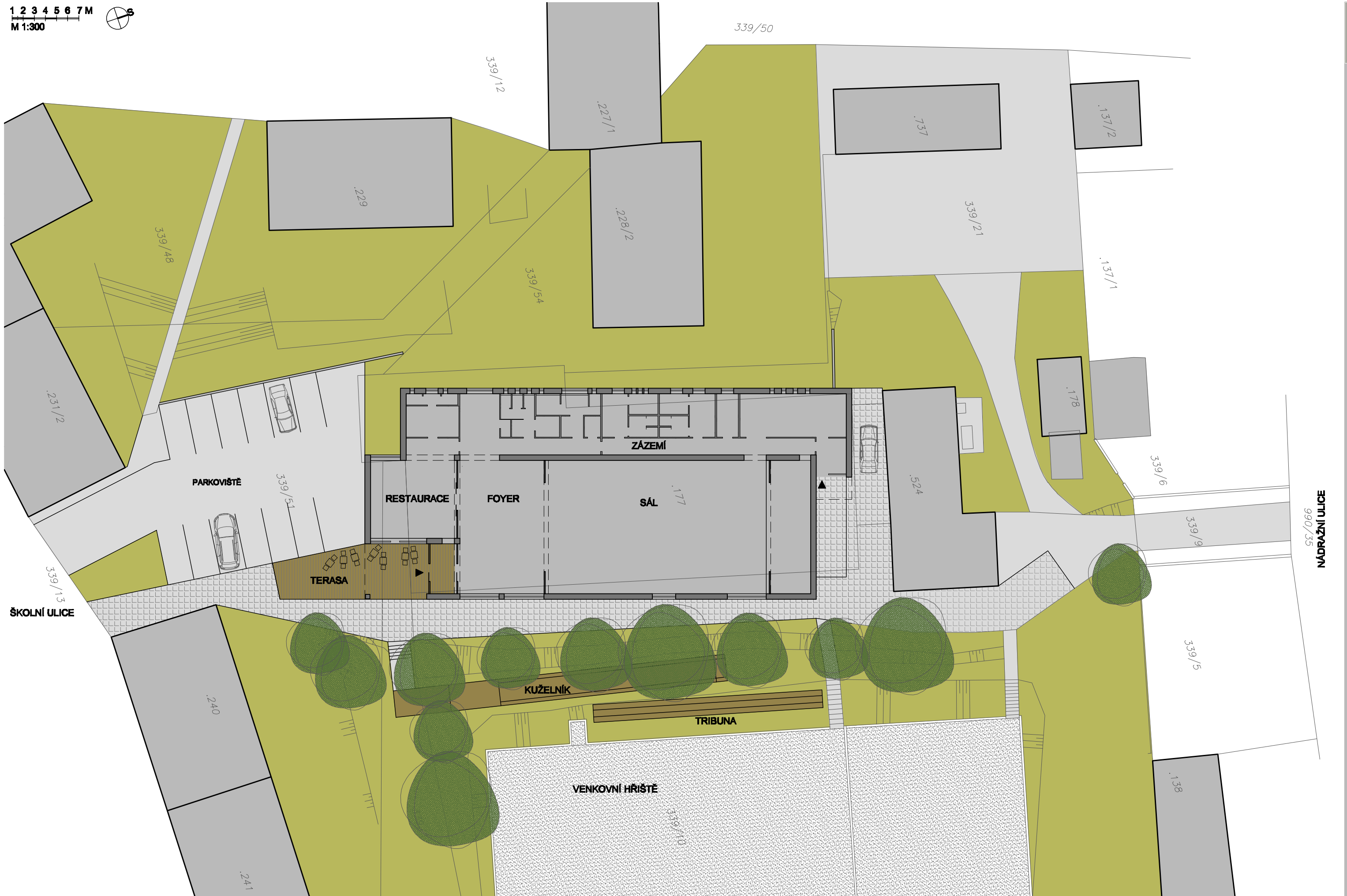


1 2 3 4 5 6 7 M  
M 1:300



SITUACE 1:300  
INVESTOR: OBEC MILÍN  
24.08.2015

# STUDIE DOSTAVBY SOKOLOVNY MILÍN

ARCHITEKT: WWW.LETAJICI-INZENYRI.CZ M. MIHALČÍK, J. STRACHOTOVÁ, SPOLUPRÁCE: M. SCHEJBAL, F. BERNARD, P.SATELIER